

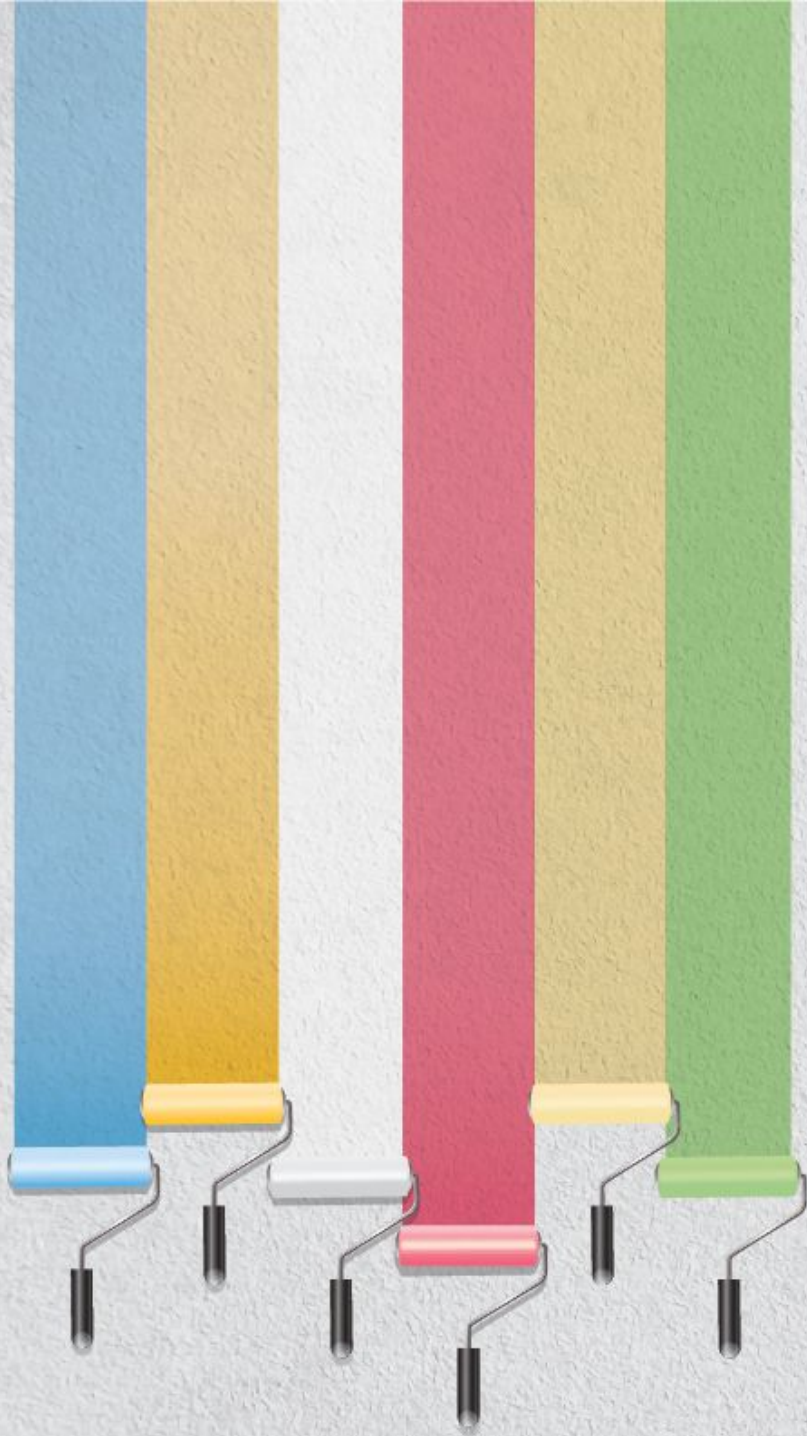


TRUTONEx
DISTEMPER PAINT



RANG UBHREGA, SAALO-SAAL CHALEGA BIRLA WHITE KA WHITE CEMENT ADVANTAGE.





TRUTONEx

DISTEMPER PAINT

TRUTONEx distemper paint by Birla White is a highly affordable and bright paint for your home interior walls. It is white cement based polymer modified distemper paint so it is more durable and provides better washability than acrylic distempers. Along with Super White colour, this paint is available in multiple factory made premix colours that gives you true tone of paint.

How to Apply

Surface Preparation

- Use emery paper to remove all loosely adhered material like dirt, dust, fungus, algae, old or loose paint & oil etc.
- Apply two Coats of Birla wall care putty and fill dent/holes. Allow drying for at least 1-2 days. Sand with emery paper 320.
- Apply one coat of Birla White PrimaCoat Primer. Allow drying for at least 3- 4 hours.

Distemper Paint Application

- Mixing: Dilute 1kg Birla White Distemper with 40% clean water (400 ml) to make a paste by mechanical stirrer (3-5 minutes). Then further add 110% clean water (1100 ml) to prepare homogeneous slurry/paint.
- Apply 2-3 coats of Birla White distemper by 4-inch brush. Allow drying for minimum 4-6 hours in between the coats.



Technical Specifications

Technical Parameter	Specification
Coverage for 2 coats (on Ideal smooth surface)*	85 - 105 sq.ft/Kg
Recommended Surfaces	Wall putty/primer, POP/Gypsum & plaster wall
Method of application	Brush or roller after suitable dilution
Recommended Thinner	Water
Thinning	150% by volume (as per guidelines)
Stability Of Thinned Paint (Pot life)	8 - 10 Hours
Drying time**	Surface Dry - minimum 30 min Hard Dry - 10-12 hrs
VOC (mg/kg)	Nil
Shade Range	Super White, Electric Blue, Daffodil Yellow, Merrie Pink, Off White and Pastel Green
Fire Hazard Class	Non-flammable
Shelf life	9 months from date of manufacture in original closed bags away from direct sunlight and excessive heat.

*Actual covering capacity may vary depending upon the surface conditions (texture, roughness & porosity), application conditions (painter skills & application method) and external factors (temperature, wind velocity etc.)

** Actual drying time may vary depending on climatic condition

Precautions

- If distemper paint slurry is kept idle for longer time (30-40 minutes) then stir well before application by steel rod/spoon/Brush.
- Do not Over-thin or over-extend the brush.
- Stir well and strain before use.

Others Point to note

- Store in a cool & dry place.
- Wear safety goggles during application. In case of contact with eyes rinse immediately with plenty of water & seek medical advice.
- It is recommended to wear suitable eye protection /nose mask during sanding, painting & surface preparation to avoid dust inhalation.
- Keep Birla white Distemper out of reach of children.





TRUTONEX

DISTEMPER PAINT

Birla White - A Unit of UltraTech Cement Limited,
9th Floor, Birla Centurion, Pandurang Budhkar Marg,
Worli, Mumbai - 400030

Telephone Board Nos : 022- 68540444 / 50365111

Website: www.birlawhite.com | Toll Free No.: 1800 11 1717

www.facebook.com/BirlaWhiteCement | twitter.com/BirlaWhite



Scan to
know more
about
TruToneX
Distemper



Scan to join
Birla White
Expert Club's
Community

