



# INTERIOR HO YA EXTERIOR, TEXTURA HAMESHA SUPERIOR!

Affordable | Multicolor Freedom | Multiple Designs



Available in 20kg and 25kg





## Trowel Finish

Birla White Texture Trowel Finish, also called Rustic Finish is a rugged finish ideally suited for external walls. Its special formulation keeps it safe against the weather. A variety of shades and textures can be applied on cement plaster, from finish concrete etc. and as it is water resistant, you can apply it even on damp surface, enhancing the extra adhesive strength. It requires no curing too.

### Technical Parameters

Sr. No.	Technical Parameters	Specifications	Test Method
1	*Coverage (Sq.m/kg/coat) [On ideal smooth surface]	0.33-0.42	In House
2	Pot life (Hours)	1.5 - 2.0	In House
3	Tensile strength @28 days) (N/mm <sup>2</sup> )	≥0.5	EN 1348
4	Water Capillary Absorption (ml), 30 mins @28 days	≤0.60	Karsten Tube
5	Bulk Density (g/cm <sup>3</sup> )	1.3 - 1.7	In House

\*This value is on smooth surface; however this may change according to surface texture.



## Application Procedure:



### 1. Surface Preparation:

- Remove all the loosely adhering material like, dirt, dust & oil, etc. from the surface by using suitable emery paper, putty blade or wire brush, etc.
- Surface imperfections such as holes, dents and cracks should be filled before application of Textura Trowel Finish.



### 2. Surface Pre-Wetting:

Pre-wetting is important before application of 'Textura Trowel Finish' on concrete/plaster surface to get best smoothness, workability, coverage & higher bond strength with the applied substrate.



#### a. Mixing Ratio:

Mix 22 to 25 % of clean water to get uniform paste formation which results in obtaining more coverage & smooth uniform shade. Only prepare a quantity which can be used within 1-2 hours of mixing with water.



#### b. Application Procedure:

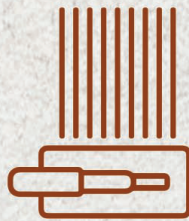
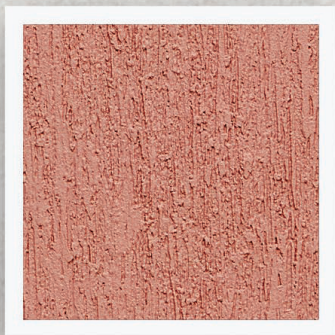
- Apply the material 2-3 mm thickness and remove the excess material for uniform surface.
- Allow surface to dry for 5-10 minutes.
- Use the fibre trowel to make the designs.





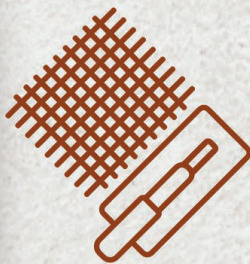
## Application Procedure

Use the fibre trowel to make the designs.



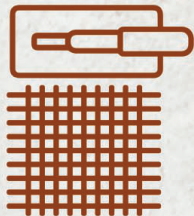
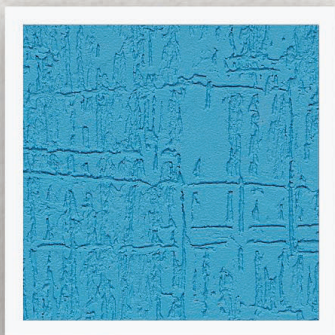
Move fibre trowel vertically from top to bottom to get Vertical Textured Finish.

### Vertical Finish BWTF1001



Move fibre trowel diagonally from right to left and diagonally left to right to get Cross Textured Finish.

### Cross Finish BWTF1002



Move fibre trowel vertically from top to bottom and horizontally left to right to get Plus-Minus Textured Finish.

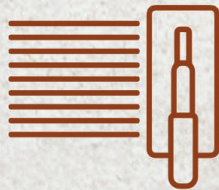
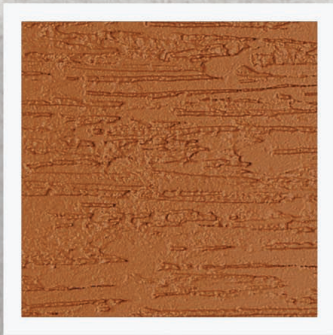
### Plus-Minus Finish BWTF1003





Move fibre trowel diagonally from top to bottom in right to left movement to get Rain Fall Textured Finish.

**Rain Fall Finish**  
**BWTF1004**



Move fibre trowel vertically from right to left or left to right movement to get Horizontal Textured Finish.

**Horizontal Finish**  
**BWTF1005**



Move fibre trowel in a random circle or in a swirling movement to get Swirly Textured Finish.

**Swirly Finish**  
**BWTF1006**

- Leave the surface to dry preferably 10-12 hours before application of paint/distemper.
- Apply the paint colors as shown in the above images or choose your choice of any desired color of paint to get final finish.





## Roller/Spray Finish

Birla White Textura Spray/Roller Finish is a subtle and pleasing finish ideal for interiors. A smooth finish in variety of colors can be applied even on damp walls. And, unlike other acrylic based finished, it has extra adhesive strength that resists weathering effects. Plus, although it is white cement based, it does not need any curing.

### Technical Parameters

Sr. No.	Technical Parameters	Specifications	Test Method
1	*Coverage (Sq.m/kg/coat) [On ideal smooth surface]	Designer Roller Finish: 0.56-0.3 Sponge Roller Finish: 0.74-1.1 Spray Finish: 1.34-1.86	In House
2	Pot life (Hours)	1.5 - 2.0	In House
3	Tensile strength @28 days) (N/mm2)	≥0.5	EN 1348
4	Water Capillary Absorption (ml), 30 mins @28 days	≤0.60	Karsten Tube
5	Bulk Density (g/cm3)	0.9 - 1.1	In House

\*This value is on smooth surface; however this may change according to surface texture.



## Application Procedure:



### 1. Surface Preparation:

- Remove all the loosely adhering material like, dirt, dust & oil, etc. from the surface by using suitable emery paper, putty blade or wire brush, etc.
- Surface imperfections such as holes, dents and cracks should be filled before application of Textura Roller/ Spray Finish.



### 2. Surface Pre-Wetting:

Pre-wetting is important before application of 'Textura Roller Finish' on concrete/plaster surface to get best smoothness, workability, coverage & higher bond strength with the applied substrate.



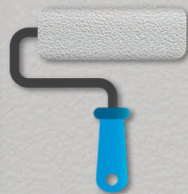
### 3. Mixing of 'Textura Roller Finish and Spray Finish':

Mix Textura-RF thoroughly to get uniform paste formation according to given water ratio for different finish which results in obtaining more coverage & smooth uniform shade. Only prepare a quantity which can be used within 1-2 hours of mixing with water.

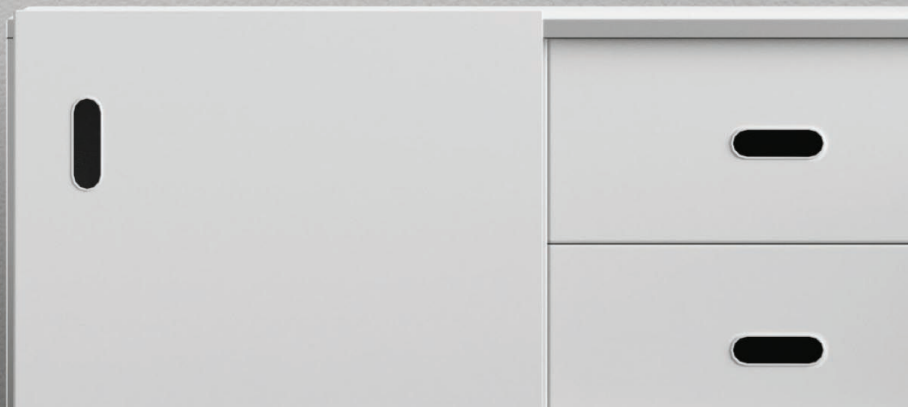
## Sponge Roller



**Honey Comb Finish  
BWRP3004**

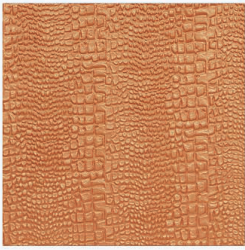


- Add 40-45 % water.
- Mix Textura-RF thoroughly to get uniform paste formation according to 40-45% water ratio, which results in obtaining more coverage & smooth uniform shade.
- Wet the sponge roller by clean water then dip in prepared paste and apply on wall directly on the surface to get the desired pattern.
- Reiterate sponge roller on prepared surface directly for expected design pattern.
- Leave the surface to dry preferably 10-12 hours before application of paint/distemper.
- Apply the Off-White Paint (as shown in the picture) or any desired colour of paint of your choice to get final finish.





## Designer Rubber Roller



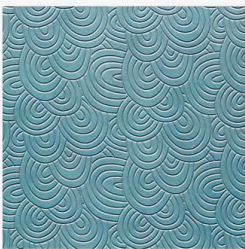
**Alligator Finish**  
**BWRF3001**



- Mix Textura-RF thoroughly to get uniform paste formation according to 32-36% water ratio, which results in obtaining more coverage & smooth uniform shade.

- Apply the material 1-3 mm thick with trowel on the prepared surface depends on roller.

- Level to applied material by using the trowel to get uniform surface & better design clarity.



**Seamless Circle Finish**  
**BWRF3002**



- Allow the surface to dry (semi dry) for at least 5-10 minutes for easy movement of roller.

- Wet the designer roller with clean water and use on applied surface as per desired design.

- Choose Seamless Circle Roller, Wood Grain Finish Roller, Alligator Finish Roller (as shown in the images) or any desired designer roller available in market.



**Wood Grain Finish**  
**BWRF3003**

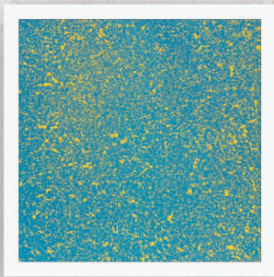


- Leave the surface to dry preferably 10-12 hours before application of paint/distemper.

- Apply any desired colour of paint of your choice to get final finish.



## Spray Finish



**Bubble Spray Finish  
BWSF2001**



- Apply 1 coat of Birla White Primer using brush or flat roller.
- Apply 1 coat of Textura RF material (mix with 45-50% water) over primer by brush or roller with any colour Stainer (such as blue paint in the image) as a base coat.
- Leave the base coat surface to dry for 3-4 hrs.

- Prepare Birla White Spray Finish Textura material by adding 42-50% water and add desire quantity of colour Stainer as per customer choice (such as yellow paint in the image) to the prepared material (mix homogeneously).
- After homogeneous mixing, apply material over surface using airless spray gun from top to bottom to achieve a uniform & desirable design.
- Leave the surface to dry preferably 10-12 hours.
- Can apply one coat of transparent silicon coating (protection coat) to increase product durability, better shining & long-time protection from any type of damages.



**Orange Peel Finish  
BWSF2002**



- Apply 1 coat of Birla White Primer using brush or flat roller.
- Apply 1 coat of Textura RF material (mix by 45-50% water) over it by brush or roller.
- Leave the base coat surface to dry for 3-4 hrs.
- Prepare Birla White Spray Finish Textura material by adding 42-50% water.

- After homogeneous mixing, apply material over surface using airless spray gun from top to bottom to achieve a uniform & desired design (as a bubble form).
- Press the applied bubble with trowel to get Orange Peel Finish.
- Leave the surface to dry preferably 10-12 hours before applying a paint or distemper.
- Apply a metallic silver colour paint (as shown in the picture) over the surface or any desired colour over it to get final finish.
- Can apply one coat of transparent silicon coating (protection coat) to increase product durability, better shining & long-time protection from any type of damages.



## **Precautions:**

- Use only on surfaces that are sound, clean, dry and free from any residue/dirt that might affect the ability of this product to bond to the surface. The use of a cement based sealer is recommended in high moisture or high traffic areas.
- Always shake the Bag well before taking the material.
- Pre-wetting is must before application to avoid fast drying of material.
- Do not apply when ambient temperature is less than 10° C or if the temperature is expected to drop to this level within 4 hours of application.
- Thinning is not advisable. Only a required quantity of mix should be prepared which can be used within 60 minutes.
- Do not keep material open for long time.
- Product cannot be applied on surfaces/substrates that are subjected to continuous seepage or dampness.
- Stir well before use.

## **Safety Measures:**

- Keep Birla White Textura-TF and Textura RF/SF pack in a dry place and out of children.
- May be harmful if swallowed. In case of ingestion seek immediate medical attention.
- Wear eye protecting equipment during application.
- In case of contact with eyes, rinse immediately with plenty of water and seek medical advice. In case of skin contact, immediately wash skin with soap and plenty of water.
- Get medical attention if irritation develops or persists. Do not breathe vapor or spray.
- It is recommended to wear suitable nose pad during sanding and surface preparation to avoid dust inhalation.









**Birla White - A Unit of UltraTech Cement Limited,**  
9th Floor, Birla Centurion, Pandurang Budhkar Marg, Worli, Mumbai – 400030  
Telephone Board Nos : 022- 68540444 / 50365111t

🌐 Website: [www.birlawhite.com](http://www.birlawhite.com) | ☎ Toll Free No.: 1800 11 1717  
f [www.facebook.com/BirlaWhiteCement](https://www.facebook.com/BirlaWhiteCement) | t [twitter.com/BirlaWhite](https://twitter.com/BirlaWhite)

**SCAN HERE**

